



# United States Department of the Interior

## BUREAU OF LAND MANAGEMENT

Prineville District Office

3050 NE 3rd Street, Prineville, Oregon 97754 [blm.gov/office/Prineville-district-office](https://blm.gov/office/Prineville-district-office)



## MODIFICATION OF EMERGENCY PUBLIC CLOSURE

**AGENCY:** Bureau of Land Management, Prineville District, Oregon.

**ACTION:** Modification of Temporary Closure of Public Lands

**SUMMARY:** This notice modifies the emergency closure of BLM-administered public lands in the Prineville District issued on August 1, 2024, near the Crazy Creek Fire. Pursuant to 43 CFR 8364, the Bureau of Land Management (BLM) hereby provides notice that effective at **5 p.m. Pacific on August 14, 2024**, the public lands bordering the Ochoco National Forest, Paulina Ranger District to the north and east are **OPEN TO PUBLIC ACCESS**, except for the following areas, which **REMAIN CLOSED**. The BLM is issuing this order as the emergency crews have completed active fire suppression in portions of these areas while other areas remain in active suppression status.

**AFFECTED AREA:** The following areas in Crook County **REMAIN CLOSED**:

All BLM-administered public lands on and around Big Summit Prairie, located in:

T. 14 S., R. 20 E.

T. 14 S., R. 21 E.

All BLM-administered public lands lying southerly of the Ochoco National Forest, easterly of Teaters Road, north of State Highway 380 and the Paulina Suplee Road, and westerly of the Crook County and Grant County line, located in:

T. 15 S., Rgs. 21-25 E.

T. 16 S., Rgs. 21-25 E.

T. 17 S., Rgs. 21-25 E.

**DATES:** This closure is effective immediately and will remain in effect until such time as conditions allow for safe use of the public lands.

**FOR FURTHER INFORMATION CONTACT:** The Prineville District Front Desk, at 541-416-6700 [BLM\\_OR\\_PR\\_Mail@blm.gov](mailto:BLM_OR_PR_Mail@blm.gov). This notice and the closure notice will be available online.

**DISCUSSION OF THE RULES:** All uses within the area are prohibited. Exceptions to these prohibitions are noted below under Exemptions. Incidents of dangerous fire behavior have been observed throughout the District.

**EXEMPTIONS:** The following persons are exempt from the provisions of this Order:

1. Any Federal, State, or Local Officer, or member of an organized medical, rescue or firefighting force engaged in fire, emergency, or law enforcement activities, or public utility employees engaged in emergency repairs.
2. BLM employees, contractors, or agents engaged in official duties.
3. Individuals operating within the scope of their official and legitimate governmental duties.
4. Individuals with valid existing rights for access (e.g., Reciprocal and Unilateral Right of Way agreement holders, permittees or lease holders, or internal landowners); and
5. Parties who carry written approval by the BLM Authorized Officer (Field Manager or District Manager) allowing access to the described public lands.

**PENALTIES:** Any person who violates this may be tried before a United States Magistrate and fined in accordance with 18 U.S.C. 3571, imprisoned for no more than 12 months, or both. Vehicles found in violation of this order may be removed.

**EFFECTIVE:** This Order is effective immediately upon signature

---

District Manager, Prineville District

**INTERIOR REGION 9 • COLUMBIA-PACIFIC NORTHWEST**  
**IDAHO, MONTANA, OREGON\*, WASHINGTON**

\* PARTIAL



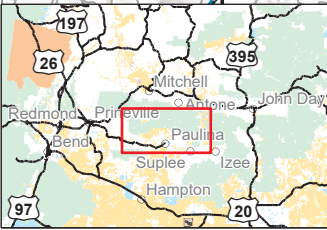
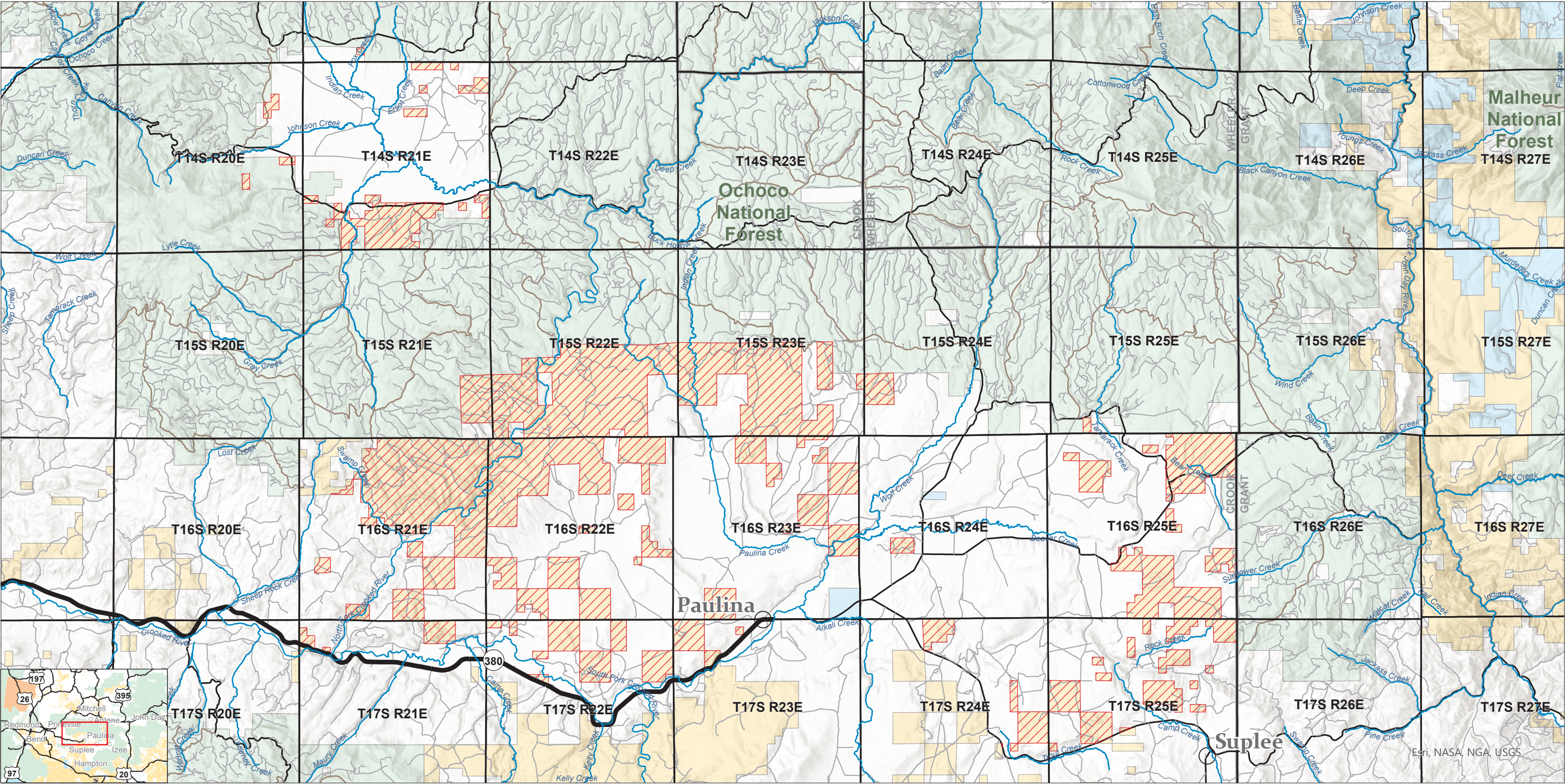


# Paulina BLM Lands Closure

Bureau of Land Management  
Prineville District Office  
3050 NE 3RD St  
Prineville, OR 97754  
(541) 416-6700



8/14/2024



BLM Closure

Highway

Arterial Road

Collector Road

Local or Resource Road

Administered Lands

Bureau of Land Management (BLM)

USDA Forest Service (USFS)

State Land

Private/Other

N

0

1

2

3

4

5

Miles

0

1

2

3

4

5

6

7

8

Kilometers

No warranty is made by the Bureau of Land Management as to the accuracy, reliability, or completeness of this map or the data displayed for individual use or aggregate use with other data.